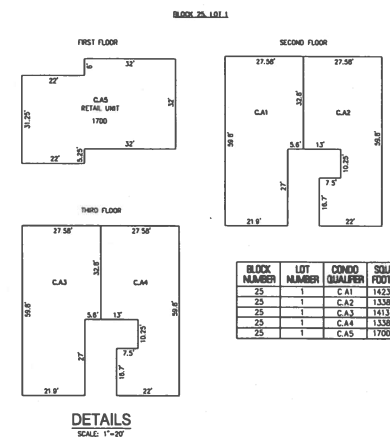
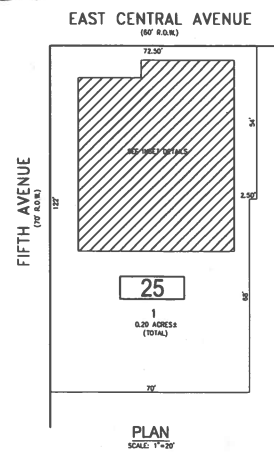


REVISIONS		
DATE	NAME	NO.

NOTE:

THIS SHEET HAS BEEN DRAWN USING COMPUTER AIDED DRAFTING/DESIGN (CAD/D) AND COORDINATE GEOMETRY (COORD).



BLOCK 25, LOT 1
410 CENTRAL TOWNHOMES, A CONDOMINIUM

BLOCK 25, LOT 1
SEE SHEET 5

TAX MAP
BOROUGH OF SEASIDE PARK
OCEAN COUNTY NEW JERSEY
SCALE NOTED DATE 11-28-2003
CHARLES E. ADAMSON N.J.P.L.S. LIC. NO. 42827

REMINGTON & VERNICK ENGINEERS
9 ALLEN STREET, TOMES RAVEN, NJ 08753
(732) 266-6210, FAX (732) 266-6416, WEB SITE ADDRESS: WWW.RVE.COM
Certificate of Authorization: 24 GA 28003300
Excellence • Innovation • Service

RVE